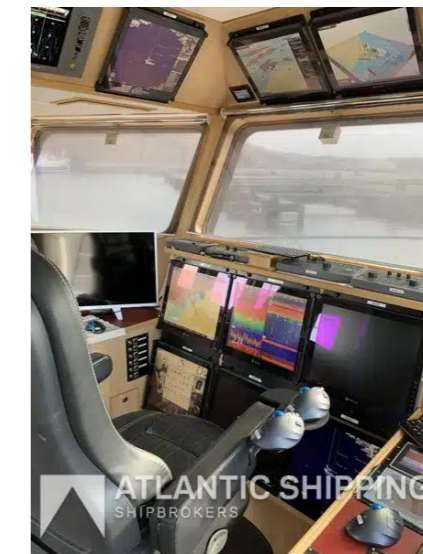


ATLANTIC SHIPPING A/S
ISLANDS BRYGGE 26
2300 COPENHAGEN S
DENMARK

PHONE: +45 +45 3332 3997
E-MAIL: info@atlanticship.dk
WEB: www.atlanticship.dk



REF NO: WS 1219

Type	Array
Built	2018 Stocznia Parseta, Poland
Class	Danish Maritime Authority (Søfartsstyrelsen)
Tonnage Gt/nt	100 GT / 30 NT
Dimensions	16.99 x 5.88 m
Main Engine	550 BHP Mitsubishi Diesel Electric (404 kW)
Propeller	2300mm in nozzle
Hold	80 Tons in two holds of abt. 45 m3 each = 90 m3
Deck Equipment	2 x 14 ts netdrums, 3 x14ts trawl winches, Electrical winches, 300 pots for lobster and crab, 8" fishpump - Seaquest